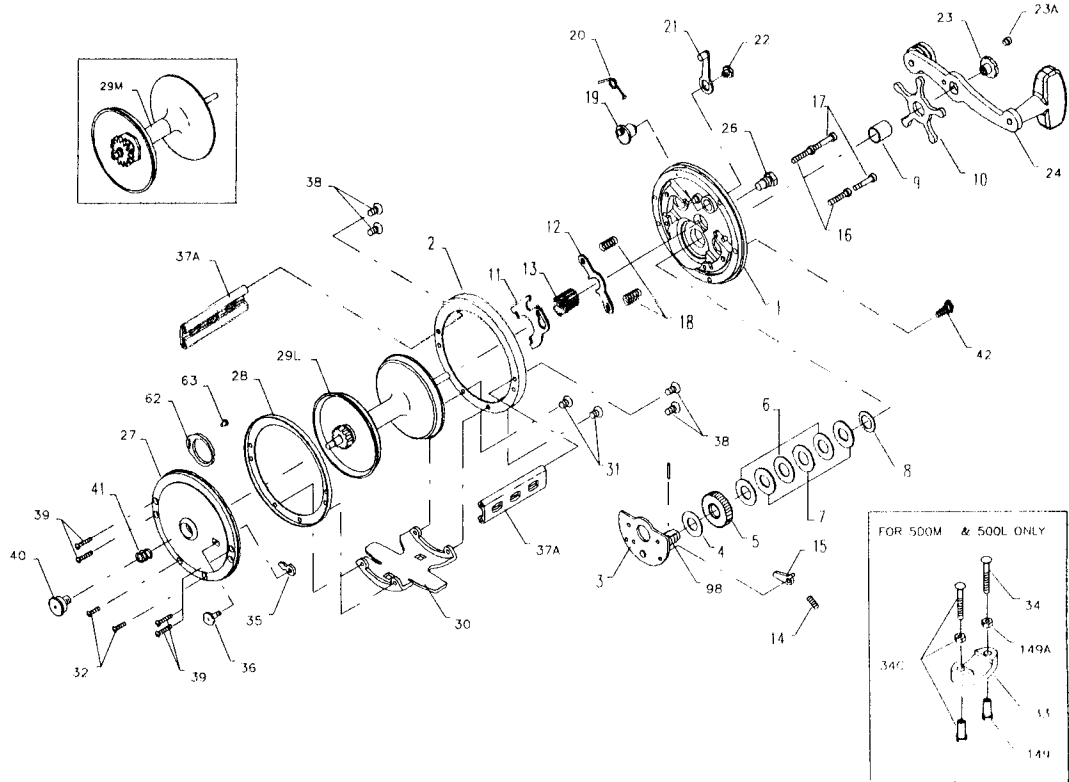




PARTS AND PRICE LIST FOR MODELS 500 AND 501



Key No.	Part No.	Description	Price	Key No.	Part No.	Description	Price
1	001 500	Right Side Plate	\$7.35	28	028 250	L.S. Ring (Inner)	\$3.15
	001 501	Right Side Plate	7.35	29L	029L500	Spool	21.20
2	002 250	Left Side Ring	7.00		029L501	Spool	19.40
3	**003 500S	Bridge w/Sleeve	7.60	29M	029M250	Spool (500)	16.10
4	004 060	Fiber Washer	.45	30	030 200	Stand (500)	6.60
5	005 500	Main Gear	5.10		030 049	Stand (501)	6.15
6	006 309	Drag Washer (3 req.)	.90	31	031 019	Right Side Stand Screw (2 req.)	.40
7	007C500	Metal Washer Set	3.00	32	032 016CH	Left Side Stand Screw (2 req.)	.40
8	008 060	Tension Spring	.50	33	033 113	Rod Clamp (500)	4.00
9	009 060	Spacing Sleeve	.90		033 049	Rod Clamp (501)	2.85
10	***010 505	Star Drag Wheel	3.50	*	*033R200	Ringed Rod Clamp (500) (Optional)	6.25
11	011 099	Eccentric Jack	1.25	34	034 045	Clamp Screw (500)	1.00
12	012 500	Pinion Yoke	.95		034 049	Clamp Screw (501)	.75
13	013 500	Pinion	3.55	34C	034C045	Rod Clamp Screw w/Nuts (500)	2.50
14	014 500	Dog Spring	.45		034C049	Clamp Screw w/Nuts (501)	1.75
15	015 500	Dog	.90	35	035 060	Click Tongue	1.15
16	016 060CH	Lower Bridge Screw	.45	36	036 060CH	Click Button	1.10
17	017 060CH	Upper Bridge Screw	.45	37A	037A500S	Spacer Bar	6.25
18	018 060	Clutch Spring	.45		037A506	Spacer Bar	6.25
19	019 250	Eccentric	2.05	38	038 007	R.S. Spacer Screw (4 req.)	.40
20	020 060L	Eccentric Spring	.45	39	039 005	J.S. Spacer Screw (4 req.)	.40
21	021 066	Eccentric Lever	1.75	40	040 060	Left Side Bearing	2.50
22	022 099	Eccentric Screw	1.50	41	041 060	Bearing Spring	.80
23	023 060	Handle Screw	1.75	42	129 200	Take Apart Thumb Screw	4.50
23A	110 060	Handle Lock Screw	.45	98	***098 505	Gear Sleeve	4.00
24	024 066	Handle	7.60	149	149 045	Clamp Nut (500-2 req.)	1.00
	024 155	Handle (501)	7.25	149A	149 200	Hex Nut (2 req.)	.50
26	026 155	Right Side Bearing	2.05	152	152 200	Clamp Wing Nut (501-2 req.)	.50
27	027 500	Left Side Plate	6.25				

*Not Shown
 **Fine tooth sleeve, older reels take a 003 500 with a coarse tooth sleeve, bridge will still be stamped 3500S.
 ***Fine tooth star drag, older reels take a 010 060 with a coarse thread.
 ****Fine tooth gear sleeve, older reels take a 098 060 with a coarse thread.